

# sip *for* SIFF

SATURDAY, OCTOBER 4, 2014  
FREMONT FOUNDRY



siiff

SIP. TASTE. WIN.

# LIVE AUCTION ITEMS

SILENT AUCTION | 7:00-8:35 PM

LIVE AUCTION | 8:35-10:00 PM

## 1| DAY OF DISTILLING



Day of Distilling for Four includes day of distilling, four souvenir bottles of vodka (one per guest), lunch provided by Glass Vodka Distillery, and dinner to follow at Seattle's famous Il Terrazzo Carmine in Pioneer Square. Glass Distillery visit to be made on mutually agreed upon date. Dinner reservation to be made directly with Il Terrazzo Carmine.

DONATED BY: Glass Distillery, Il Terrazzo Carmine

RETAIL VALUE: \$700.00

## 2| WALLA WALLA WINE WEEKEND



Experience Washington wine tasting as you never have before! You and a guest will enjoy a once-in-a-lifetime trip to Walla Walla flying on Ian and Laura MacNeil's private plane. Once in Walla Walla, enjoy a first-class tasting of award-winning wines from Dunham Cellars and a tour of the winery and cellar with Senior Winemaker Eric Dunham. Tasting includes wines from Eric's private collection. End the evening in comfort and convenience in Dunham's "Dog House," which is the apartment connected to the cellar.

DONATED BY: Dunham Cellars, Ian and Laura MacNeil,  
Billy O'Neill

RETAIL VALUE: \$3,500.00

### 3| ULTIMATE SIFF CINEMA EXPERIENCE

PRIVATE PARTY AT SIFF FILM CENTER



Come enjoy the most intimate of SIFF Cinema experiences at a private screening for up to 100 of your guests in the SIFF Film Center theater. All ages welcome, this movie-going experience is great for adults and children alike! This once-in-a-lifetime opportunity affords the chance to enjoy one of your favorite flicks or a film from SIFF's private library on the big screen and in the company of your favorite people. Your guests will indulge in complimentary concessions, including SIFF's generous assortment of popcorn, soft drinks, and candies. This is the perfect package for a birthday celebration, special anniversary, or benefit event. Scheduling subject to availability and excludes Fri-Sun evening slots.

DONATED BY: SIFF

RETAIL VALUE: \$1,000.00

### 4| INSTANT WINE CELLAR



Stock your wine collection with cases of Washington's finest wines. Featuring hand selected wines/cases from Sip For SIFF 2014: Billy O Wines, Cadence Winery, Dunham Cellars, O Wines, and Sparkman Cellars. Indulge in the variety of quality of wines crafted in the Evergreen State.

DONATED BY: Billy O, Cadence Winery, Dunham Cellars, O Wines, Sparkman Cellars

RETAIL VALUE: \$1,760.00

---

YOUR SUPPORT TONIGHT DIRECTLY BENEFITS SIFF'S MISSION TO CREATE EXPERIENCES THAT BRING PEOPLE TOGETHER TO DISCOVER EXTRAORDINARY FILMS FROM AROUND THE WORLD.

IT IS THROUGH THE ART OF CINEMA THAT WE FOSTER A COMMUNITY THAT IS MORE INFORMED, AWARE, AND ALIVE.

## 5| ELEGANT EASTSIDE ESCAPE



To kick off your Eastside Escape, you and a guest will join John Patterson and the Patterson Cellars team for a day of winemaking. This may include a day at harvest (highly recommended), a day of blending trials, and/or a day of bottling. Whatever you choose, your day will be filled with rubber boots, wash down hoses, lunch and beer at a local brewery, and a case of whatever wine it is that you helped work on that day! To follow your day of winemaking, ride in style with complimentary car service provided by Uber from Woodinville to Kirkland. Once in Kirkland, enjoy a multi-course tasting menu created by the innovative Chef Don Curtiss at Volterra restaurant.

DONATED BY: Patterson Cellars, Volterra, Uber

RETAIL VALUE: \$700.00

## 6| CHIHULY EXPERIENCE AND ARTWORK



You and three friends will enjoy all this exhibition has to offer! In the Exhibition Hall, Glasshouse and Garden you'll view a presentation of Chihuly's significant series of work including the suspended "Glasshouse Sculpture." Stroll through the Garden day or night and enjoy the installations juxtaposed with the natural environment. Enjoy the dishes in the Collections Cafe as you're surrounded by Chihuly's personal collections. Two exhibition catalogs are yours to keep as mementos of this experience. In the Exhibition Hall, you will view Chihuly's Pendleton blanket collection; with the purchase of this package you will take home a beautiful Chihuly-designed Pendleton Blanket. Blanket No. 7 is part of a collaboration between Chihuly and Pendleton. An impressive statement displayed on a wall, or warm and practical in a chair and folded at the foot of a bed, these 64" x 80" blankets are made of pure wool with a little spool-spun cotton. A sewn suede patch includes the Chihuly signature and number in the edition. This auction lot also includes a framed print by Chihuly. "Three Baskets" is a limited edition five-color lithograph created in 2001. This elegant print characterizes his Basket series with the image of three nested elements in clean bold strokes. Experience Restrictions: Nontransferable, non-extendable, not redeemable for cash, not replaceable if lost or stolen. Expiration: 6/30/2015.

DONATED BY: Chihuly Studio

RETAIL VALUE: \$2,625

---

### SAVE THE DATE | STAGE TO SCREEN

National Theatre Live: **A Streetcar Named Desire** | Oct 3-9

National Theatre Live: **Medea** | Oct 10-16

Royal Shakespeare Company: **Two Gentlemen of Verona** | Oct 11-15

National Theatre Live: **Frankenstein** | Oct 31 - Nov 2



## 7| CHEF'S DINNER WITH WINE PAIRINGS FOR EIGHT AT MISTRAL-KITCHEN



Restaurateur and chef William Belickis will provide a 6-course dinner with wine pairings for eight people at his downtown restaurant, Mistral-Kitchen. Mistral-Kitchen is known for exquisite food, a fantastic wine list, and a cocktail bar that is second-to-none among Seattle restaurants. When it opened in 2011, *Seattle Weekly* named Mistral-Kitchen "Best New Restaurant in Seattle." Originally from New York, William has owned and run restaurants in Seattle for the past 20 years.

DONATED BY: Mistral-Kitchen

RETAIL VALUE: \$2,000

## 8| PALM SPRINGS PRESIDENTIAL PACKAGE



Enjoy a perfect Palm Springs escape as our SIFF Board President, Michelle Quisenberry does! This getaway includes a 5-night stay in a stunning mid-century modern home (sleeps up to 6) in the highly desirable Deepwell neighborhood. Designed by architect Hugh M. Kaptur in 1960, this architectural gem features 3 master suites, a saltwater pool, and a lovingly re-imagined interior by Modernous to evoke the glamour, style, and sophistication of the Palm Springs lifestyle! While you are there, you will enjoy an insiders tour of Palm Springs modern architecture led by Robert Imbers (2 guests). You will see hidden masterpieces and learn about the talented architects, designers, and builders who contributed to Palm Springs' modernist legacy. You can then go enjoy it all from above with a tram sky tour (2 guests). Since Palm Springs is known for its world-class golf, you will enjoy a morning of golf hosted by Art Olson (up to 3 people) at the world class Desert Island Country Club, including lunch and drinks. During your stay you can hit the town to experience some of Palm Springs' best dining experiences: an authentic Greek lunch for four at Greek Islands Restaurant, sip drinks and nibble on farm-to-table appetizers by Chef Michael Beckman at the Workshop Kitchen + Bar, dine in style with a VIP culinary experience at Spencer's restaurant (4 guests) featuring the 4-star cuisine of Chef Eric Wadlund, champagne, wine, and incredible ambiance. Gratuity and taxes are included, so prepare to be treated like royalty. Of course, Palm Springs would not be complete without a spa day, so treat yourself with a \$250 treatment at Psyc Spa at the Parker Palm Springs.

DONATED BY: Modernous, Greek Islands Restaurant, Art Olson, Palm Springs Modern Tours, Parker Palm Springs, Michelle Quisenberry, Spencer's Restaurant

RETAIL VALUE: \$5,200.00

## 9| ESCAPE TO FRANCE



Bask in the sunshine and idyllic beauty of Southwestern France when you spend a week in this charming, fully equipped French cottage (sleeps up to 4). Set in the Dordogne region about 90 miles east of Bordeaux, the cottage is located in Berbiguières, a small, picturesque village clustered along the walls of a 15th-century chateau. During your stay, you'll have easy access to nearly 50 castles that date from the 100 Years War (1325-1453) and to the Dordogne River for swimming and canoeing. The vineyards of St. Emillion, Montbazillac, and Cahors are within a couple hours drive, and many restaurants and markets are nearby. With two round-trip complimentary BusinessElite\*\* tickets from Delta Air Lines, Inc., with direct flight to Paris, you have the chance to extend your French getaway into a multi-city affair!

DONATED BY: Katherine De Bruyn, Delta Air Lines

RETAIL VALUE: \$28,000.00

\*\*Delta passengers flying internationally from Seattle will enjoy BusinessElite service and its full range of premium products for a comfortable, relaxed, and productive in-flight experience. BusinessElite benefits include full flat-bed seats with direct aisle access on our 767-400, 777, 767-300, 747 and A330 fleets. All trans-Pacific routes and all Delta wide-body planes offer full flat-bed seats in BusinessElite. In addition, Delta's BusinessElite offers Westin Heavenly In-Flight Bedding featuring a full-size pillow and quilted comforter, chef-designed cuisine and Master Sommelier Andrea Robinson's upgraded wine program, PC power and industry-leading "Delta Studio" including hundreds of complimentary movies, TV shows, songs and games, and modern china, cutlery, linens and an upgraded amenity kit featuring Tumi and MALIN+GOETZ products. The tickets will be awarded in the form of two certificates that may be redeemed for round-trip BusinessElite travel between Seattle and Europe. The certificate must be redeemed and ticket issued by the date stated on certificate. Any transportation that is unclaimed, is not awarded, or is otherwise not used by the travel completion date specified will be forfeited. Certificate seats are limited and may not be available on all flights or in all markets. Certificates are non-transferable, are not redeemable for cash and are void if sold or bartered. Additional restrictions may apply.

## 10| MASERATI WEEKEND GETAWAY



Take to the open road with your very own Maserati for the weekend! Maserati of Seattle will hand over the keys to the newly launched Ghibli for one weekend (Fri-Sun) to experience Maserati's first-ever, mid-size four-door luxury sports sedan vehicle. Available with all-wheel-drive, the Ghibli is powered by a Ferrari built twin-turbo V6 engine capable of over four hundred horsepower. While taking the world's best ever test drive, enjoy a one-night stay at Hood Canal's historic Alderbrook Resort & Spa, along with a \$100 dining credit, \$100 spa credit, and kayak rentals for two. Maserati for the weekend must be used in conjunction with the one night stay at Alderbrook Resort & Spa; dates must be mutually agreeable between winning bidder, Maserati of Seattle and Alderbrook Resort & Spa. Must be 25 years of age or older, have a valid Washington driver's license, and have full coverage insurance, and be able to present proof. Limited to a max. of 250 miles. Any damage to the vehicle incurred while in the care and possession of the winning bidder will be repaired and invoiced by Maserati of Seattle to the bidder. Vehicle must be operated on public roads and not on a track or similar venue.

DONATED BY: Alderbrook Resort & Spa, Ferrari Maserati of Seattle

RETAIL VALUE: \$2,000.00

## 11| LUXURIOUS TEN-DAY CRUISE FOR TWO ON HOLLAND AMERICA LINE

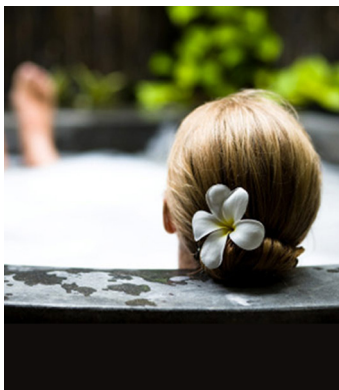


When you step aboard one of the 5-star ships of Holland America Line, you will experience a voyage unlike any other. You can choose any cruise for two (same stateroom) up to ten days in length to a variety of destinations. Your journey will include extraordinary dining, spacious staterooms, elegant surroundings, and days filled with new discoveries and gracious pampering by an award-winning crew. You can choose to partake in as many – or as few – activities as you wish, from the renowned Greenhouse Spa and Salon, to cooking demonstrations and wine tasting in the Culinary Arts Center, and much more. Or simply relax and enjoy the spectacular scenery from the beautiful wrap-around teak deck. Get away on a vacation like no other. No expiration date. (Excludes Alaska Cruise Tours, Grand Voyages, Holiday (Christmas & New Year's) Voyages, World Cruises and chartered sailings. Mutually agreeable date. Minimum outside stateroom. Airfare to and from departure and arrival ports not included. Does not include taxes, onboard charges, shore excursions, or hotel services charges.

DONATED BY: Holland America

RETAIL VALUE: \$6,700.00

## 12| HEAD TO TOE PAMPER PACKAGE - MIND, BODY, WARDROBE



In this head-to-toe Pamper Package, you will receive every tool necessary for a refreshed, rejuvenated you! Beginning with the body, Core Power Yoga has provided one month unlimited of its core- and cardio-centric yoga, providing the perfect overall workout. Following your hard training, treat yourself to four one-hour massages provided by Hands On Location Massage. Moving from body to mind or in this case your face, Dr. Stella Desyatnikova is offering complimentary consultation and Botox facial rejuvenation services valued at \$600. Following your overall body treatment, don yourself in a Pencil Blue French leather men's flight deck bomber jacket from Designer Carole McClellan's 2015 collection with a custom made to measure shirt by Truemaker and indulge in fashions, lunch, and valet parking from Nordstrom (gift card valued at \$600.00). Note: please contact individual business for redemption of gift certificates.

DONATED BY: Carole McClellan, Core Power Yoga,  
Dr. Stella Desyatnikova, Hands on Location Massage, Truemaker

RETAIL VALUE: \$3,700.00

---

### SAVE THE DATE | CINEMA ITALIAN STYLE

SIFF'S sixth annual festival of the best in current Italian films. The week showcases extraordinary features and documentaries with some of the biggest names in Italian cinema today. With fabulous parties and special guests in attendance, the week promises to be a celebration *de non perdere!*

**Nov 13-20, 2014**

## 13| EXPERIENCE PERUGIA, ITALY



Jet off in comfort and style with complimentary round trip Business Elite\*\* airfare for two from Delta Air Lines to Rome. Enjoy seven nights' stay for you and up to six guests in the heart of Perugia, Italy. Foresteria, an apartment centrally located in the city, is within minutes distance of restaurants, shops, museums, historic buildings, scenic walking tours, and in close proximity to Umbria and Tuscany. The three bedroom, one bath accommodation is perfect for a group of friends or family. Also equipped with a kitchen, you will be free to test your Italian cooking skills while in Perugia! Prepare for your Italian getaway with an hour complimentary Italian lesson at Percorso Italiano.

DONATED BY: City of Perugia, Delta Air Lines, Percorso Italiano

RETAIL VALUE: \$28,200.00

\*\*Delta passengers flying internationally from Seattle will enjoy BusinessElite service and its full range of premium products for a comfortable, relaxed, and productive in-flight experience. BusinessElite benefits include full flat-bed seats with direct aisle access on our 767-400, 777, 767-300, 747 and A330 fleets. All trans-Pacific routes and all Delta wide-body planes offer full flat-bed seats in BusinessElite. In addition, Delta's BusinessElite offers Westin Heavenly In-Flight Bedding featuring a full-size pillow and quilted comforter, chef-designed cuisine and Master Sommelier Andrea Robinson's upgraded wine program, PC power and industry-leading "Delta Studio" including hundreds of complimentary movies, TV shows, songs and games, and modern china, cutlery, linens and an upgraded amenity kit featuring Tumi and MALIN+GOETZ products. The tickets will be awarded in the form of two certificates that may be redeemed for round-trip BusinessElite travel between Seattle and Europe. The certificate must be redeemed and ticket issued by the date stated on certificate. Any transportation that is unclaimed, is not awarded, or is otherwise not used by the travel completion date specified will be forfeited. Certificate seats are limited and may not be available on all flights or in all markets. Certificates are non-transferable, are not redeemable for cash and are void if sold or bartered. Additional restrictions may apply.

## 14| TRAVEL LIKE A ROCK STAR



Alaska Airlines MVP Gold Card -- The Only Way to Travel! MVP Gold Status is reserved for the airline's most valuable customers. MVP Gold status good through 12/31/2015 – 15 months of elite status! Includes: Unlimited complimentary upgrades to first class for you and your traveling companion (subject to availability); 100% Bonus Miles (Double Miles!) every time you fly; access to the express security line at Sea-Tac and many other airports; baggage fee waived for first two checked bags on Alaska, Horizon and Delta; priority boarding on Alaska, Horizon and Delta; top priority for stand-by status; first class check-in privileges; dedicated phone lines and VIP desk; most fees waived; and access to the VIP Lounge.

DONATED BY: Alaska Airlines

RETAIL VALUE: \$10,000.00



## 15| 12 MONTHS OF GOURMET FOOD, WINE, AND DINING



Enjoy a year filled with the best of Northwest cuisine! Included in this bursting package is Alder Smoked Sockeye Salmon from University Seafood Poultry Company, an 8" chocolate cake certificate from the incredible Bakery Nouveau, 12oz of coffee delivered to your home by Caffe Umbria once a month for a year, assorted Dilettante Chocolates, 12 dozen Eltana bagels and spreads, and two bottles of Megan Griffiths Genius Juice By Sparkman Cellars. This package also includes: Aqua By El Gaucho gift card, Cafe Presse gift card, Lark gift card, La Medusa gift card, La Spiga gift card, Le Pichet gift card, Poppy gift card, Spinasse gift certificate, Tallulah's gift card, Taylor Shellfish gift card, The Pink Door gift card, a Space Needle gift card, and more!

DONATED BY: Bakery Nouveau, Cafe Presse, Caffe Umbria, La Medusa, Le Pichet, University Seafood, The Pink Door

RETAIL VALUE: \$2,530.00

## 16| ALL-INCLUSIVE PATAGONIA EXPEDITION



Considered the trekking experience of a lifetime, this is one of the most popular hikes in Patagonia. Although this trek is growing in popularity, the remote nature, rough trails, and strong winds can humble even a seasoned trekker. Torres del Paine is an amazing and immense park, and the 'W' trek brings you up close to its world-famous Patagonian views and natural splendors. The typical 'W' takes five to seven days, with five to eight hours of hiking per day. Most notably, the trek boasts a lot of the park's must-see attractions: Los Torres, Los Cuernos, Valle Frances, Paine Grande, and Glacier Grey. Expiration: May 31, 2016.

DONATED BY: Erratic Rock

RETAIL VALUE: \$1,740.00

---

FOLLOWING THE AUCTION, PLEASE STOP BY AND COLLECT YOUR ITEM(S) AT THE PICK-UP TABLE IN THE COURTYARD ON YOUR WAY OUT. IF YOU DON'T WIN ANY ITEMS, AND YOU SIGNED UP FOR EXPRESS CHECKOUT, THERE IS NO NEED TO VISIT THE TABLE. YOU WILL BE EMAILED A RECEIPT WITHIN 1-3 DAYS.



**Holland America Line**

*A Signature of Excellence*



**DELTA**

*Alaska Airlines*®

**ALSO SPONSORED BY** | Billy O Wines, The Boeing Company, Cadence Winery, Dunham Cellars, O Wines, Sparkman Cellars, Aqua By El Gaucho, Collections Cafe, Lark, Matt's in the Market, Mistral-Kitchen, The Space Needle Corporation, Volterra, Glass Distillery, Skip Rock Distillers, Westland Distillery, Dilettante, Trophy Cupcakes and Party, Freeman Co., Fremont Foundry and Events, Darek Mazzone, Red Carpet Valet Parking, and Tiffany Diamond Photography.

**SPECIAL THANKS** | Jim Angelo, Kraig Baker, William Belickis, Kyle Cable, Dale and Leslie Chihuly, John Comerford, Sharon Conner, Christopher Conrad, Don Curtiss and Michelle Quisenberry, David and Katherine De Bruyn, Megan Griffiths, Michael and Donna James, Dariusz Kaliszuk, Michelle Knott, Sèan Kreyling, Brian LaMacchia, Megan Leonard, Ian Lindsay, Scott Lipsky, Ian and Laura MacNeil, Colleen McElroy, Mary Metastasio, Richie Meyer and Susan Harmon, Dana Morgan, Tiffany Moss, Billy and Piper O'Neill, Leo Pfeiffer, Rick Rasmussen, SIFF Board of Directors, Keith and Teresa Simanton, Mark Titus, Carl Tostevin and Mickey McDonough, Richard von Riesen, Edwin and Noreen Weihe, Sheree Wen, and Kendall Williams.

**EVENT CO-CHAIRS** | Michelle Quisenberry and Billy O'Neill

**DEVELOPMENT COMMITTEE MEMBERS** | Donna James - *Chair*, Jim Angelo, William Belickis, Sharon Conner, Dariusz Kaliszuk, Richie Meyer, Michelle Quisenberry, Teresa Simanton, Natalie Chhim, Phoebe Hopkins, and Renee C. Look

**MANAGING DIRECTOR** | Mary Bacarella

**ARTISTIC DIRECTOR** | Carl Spence



**SIFF AND TV5MONDE PRESENT**

# **FRENCH CINEMA NOW**

**OCTOBER 23-30 | SIFF CINEMA**

SIFF'S THIRD ANNUAL CELEBRATION SPOTLIGHTING THE STATE OF CONTEMPORARY FRANCOPHONE CINEMA WITH EXTRAORDINARY NEW FILMS, SPECIAL GUESTS, AND PARTIES. THE FESTIVAL EXPLORES THE DIVERSITY OF CURRENT FRENCH CINEMA FROM EXPLOSIVE DRAMAS TO UNPREDICTABLE COMEDIES TO HISTORICAL EPICS AND ANIMATION.



Seattle International Film Festival

**READY  
SET  
BUY!**

**FESTIVAL PASSES *and* TICKETS  
ON SALE OCTOBER 16!**

*Don't get left behind.*

**siff**.net

