

SIFF cinema

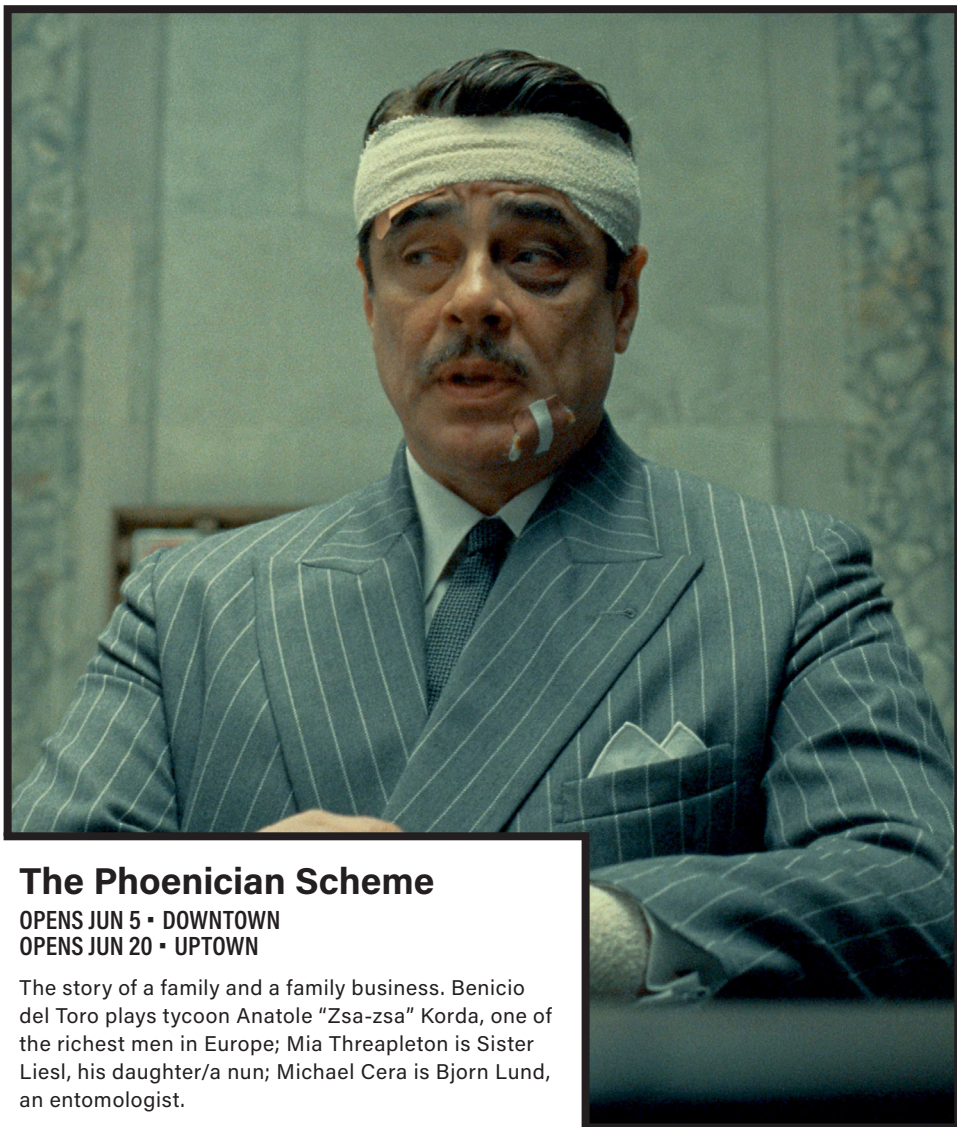
SIFF CINEMA DOWNTOWN
2100 4th Ave. • Seattle, WA 98121

SIFF CINEMA EGYPTIAN
805 E Pine St. • Seattle, WA 98122

SIFF CINEMA UPTOWN
511 Queen Anne Ave. N • Seattle, WA 98109

SIFF FILM CENTER
167 Republican St. • Seattle, WA 98109

JUNE 2025 HIGHLIGHTS



The Phoenixian Scheme

OPENS JUN 5 • DOWNTOWN
OPENS JUN 20 • UPTOWN

The story of a family and a family business. Benicio del Toro plays tycoon Anatole "Zsa-zsa" Korda, one of the richest men in Europe; Mia Threapleton is Sister Liesl, his daughter/a nun; Michael Cera is Bjorn Lund, an entomologist.



SIFF



SCIENCE FICTION & FANTASY SHORT FILM FESTIVAL

'25

SIFF CINEMA UPTOWN
June 7 & 8



JUNE IS

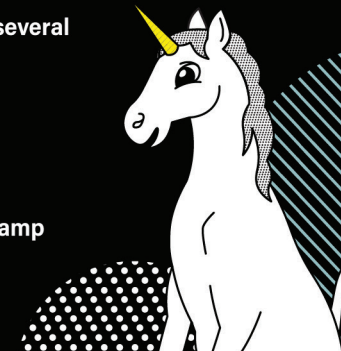


MEMBER MONTH

AT SIFF

Beginning Saturday, June 1 we will offer our members several benefits throughout the month including...

- BOGO ticket deals only for SIFF members
- Complimentary screenings
- June 6: Member Only Film Talk with Dan Doody
- June 25: Member Only Film Talk with Carson Rennekamp
- June 26: Free Member Only Trivia Night
- June 30: Member Only Film Talk with Jeremy Cropf



CONNECT WITH US

@SIFFNEWS on all socials



JUNE 2025 FILM SCHEDULE*

*Schedule is subject to change. Please check
SIFF.NET for up-to-date information.

SUNDAY	MONDAY	TUESDAY	WEDNESDAY	THURSDAY	FRIDAY	SATURDAY
1 [D] Rashomon [D] Ran [U] Pavements [U] April [U] Jane Austen Wrecked My Life [F] There is Another Way	2 [D] Ran [U] Pavements [U] Jane Austen Wrecked My Life [U] The Eternal Song [F] There is Another Way	3 [D] Ran [U] April [U] Jane Austen Wrecked My Life [F] There is Another Way	4 [D] Ran [U] Pavements [U] Jane Austen Wrecked My Life [U] <i>Movie Club: Sorcerer</i> [F] There is Another Way	5 [D] The Phoenician Scheme [U] Pavements [U] April [U] Jane Austen Wrecked My Life [F] Flying In	6 [D] The Phoenician Scheme [U] Jane Austen Wrecked My Life [U] Shall We Dance? [U] High Art	7 [D] The Phoenician Scheme [U] Jane Austen Wrecked My Life [U] Shall We Dance? [U] High Art [U] Sci-Fi/Fantasy Short Film Festival [F] Imaginal Disk Part 2: Cracking the Chrysalis
8 [D] The Phoenician Scheme [U] Jane Austen Wrecked My Life [U] Shall We Dance? [U] High Art [U] Sci-Fi/Fantasy Short Film Festival Youth Track [F] Swamp Dogg Gets His Pool Painted [F] <i>GRRL HAUS x SIFF: NeuroCinema</i>	9 [D] The Phoenician Scheme [U] Jane Austen Wrecked My Life [U] Shall We Dance? [U] High Art [F] Swamp Dogg Gets His Pool Painted	10 [D] The Phoenician Scheme [U] Jane Austen Wrecked My Life [U] Shall We Dance? [U] High Art	11 [D] The Phoenician Scheme [U] Jane Austen Wrecked My Life [U] Shall We Dance? [U] High Art	12 [D] The Phoenician Scheme [U] Jane Austen Wrecked My Life [U] Shall We Dance? [U] High Art [U] Materialists [F] Force of Water	13 [D] The Phoenician Scheme [U] The Life of Chuck [U] Love [U] Materialists [F] <i>NTLive: A Streetcar Named Desire</i>	14 [D] The Phoenician Scheme [U] The Life of Chuck [U] Love [U] Materialists [F] <i>NTLive: A Streetcar Named Desire</i> [F] They Call Her Death
15 [D] The Phoenician Scheme [U] The Life of Chuck [U] Love [U] Materialists [F] Swamp Dogg Gets His Pool Painted [F] They Call Her Death	16 [D] The Phoenician Scheme [U] The Life of Chuck [U] Love [U] Materialists [U] Eat Drink Man Woman [F] <i>NTLive: A Streetcar Named Desire</i>	17 [D] The Phoenician Scheme [U] The Life of Chuck [U] Love [U] Materialists [U] Classified Cinema	18 [D] The Phoenician Scheme [U] The Life of Chuck [U] Love [U] Materialists [U] Action! Action!	19 [D] The Phoenician Scheme [D] 28 Years Later [U] The Life of Chuck [U] Love [U] Materialists	20 [D] 28 Years Later [U] The Life of Chuck [U] Materialists [U] The Phoenician Scheme [F] We Are Guardians	21 [D] 28 Years Later [U] The Life of Chuck [U] Materialists [U] The Phoenician Scheme [F] We Are Guardians
22 [D] 28 Years Later [U] The Life of Chuck [U] Materialists [U] The Phoenician Scheme [U] Brokeback Mountain [F] We Are Guardians	23 [D] 28 Years Later [U] The Life of Chuck [U] Materialists [U] The Phoenician Scheme [U] Brokeback Mountain [U] The Wedding Banquet	24 [D] 28 Years Later [U] The Life of Chuck [U] Materialists [U] The Phoenician Scheme [U] Brokeback Mountain	25 [D] 28 Years Later [U] The Life of Chuck [U] Materialists [U] The Phoenician Scheme	26 [D] 28 Years Later [U] The Life of Chuck [U] Materialists [U] The Phoenician Scheme [U] <i>UNSTREAMABLE: Pink Flamingos</i>	27 [D] 28 Years Later [U] The Phoenician Scheme [U] Familiar Touch [F] Searching for Nika	28 [D] 28 Years Later [U] The Phoenician Scheme [U] Familiar Touch [F] We Ride Why
29 [D] 28 Years Later [U] The Phoenician Scheme [U] Familiar Touch [F] We Ride Why	30 [D] 28 Years Later [U] The Phoenician Scheme [U] Familiar Touch	<div> <div>[D] SIFF CINEMA DOWNTOWN</div> <div>[U] SIFF CINEMA UPTOWN</div> <div>[F] SIFF FILM CENTER</div> </div> <div> Sundays & Tuesdays: Open Caption Screenings </div> <div> Mondays: Discount Movie Mondays </div> <div> <i>Available for select films; see SIFF.NET</i> </div>				



Rashomon (1950)

CLOSES JUN 1 • DOWNTOWN

A horrible crime is told and retold from multiple—and vastly divergent perspectives—in the classic film that brought Japanese auteur Akira Kurosawa to the global stage.



28 Years Later

OPENS JUN 19 • DOWNTOWN

Academy Award®-winning director Danny Boyle and Academy Award®-nominated writer Alex Garland reunite for *28 Years Later*, a terrifying new story set in the world created by *28 Days Later*.

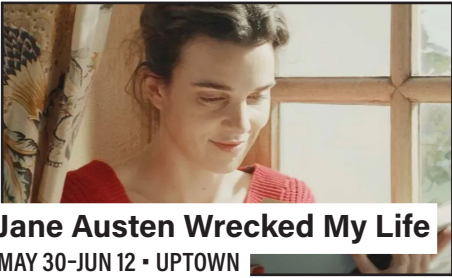
DIRECTOR Q&A



Pavements

MAY 30-JUN 5 • UPTOWN

Alex Ross Perry surveys the emblematic 1990s US indie rock band in typically idiosyncratic style: part-documentary, part-biopic, part-stage musical—but all *Pavement*. *Pavement music video director Lance Bangs and producer Gabe Spierer scheduled to attend for a post-film Q&A after the 7:00pm screening on May 30.*

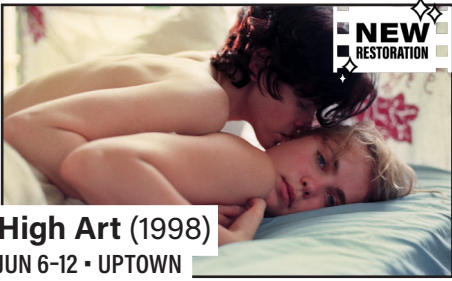


Jane Austen Wrecked My Life

MAY 30-JUN 12 • UPTOWN

Agathe (Camille Rutherford) is a hopelessly clumsy yet charming young woman who works in the legendary Shakespeare & Co. bookshop in Paris, while she dreams of being a successful writer, and of experiencing love akin to a Jane Austen novel, she finds herself desperately single and plagued by writers block.

NEW RESTORATION



High Art (1998)

JUN 6-12 • UPTOWN

Starring Ally Sheedy, Radha Mitchell, and Patricia Clarkson, Lisa Cholodenko’s debut feature captures the intoxicating haze of limerence, addiction, and power struggles through the evolving dynamics between Syd, a driven assistant editor for a photography magazine, and her upstairs neighbor Lucy, a once-acclaimed photographer.



The Life of Chuck

OPENS JUN 13 • UPTOWN

From the hearts and minds of Stephen King and Mike Flanagan comes *The Life of Chuck*, the extraordinary story of an ordinary man. This unforgettable, genre-bending tale celebrates the life of Charles ‘Chuck’ Krantz as he experiences the wonder of love, the heartbreak of loss, and the multitudes contained in all of us.

NEW RESTORATION



40th Anniversary: Ran (1985)

CLOSES JUN 4 • DOWNTOWN

Akira Kurosawa’s Academy Award-winning adaptation of William Shakespeare’s *King Lear*, *Ran* considers the disastrous consequences of Lord Hidetora Ichimonji’s (Tatsuya Nakadai) decision to split his kingdom among his three sons.



SIFF MOVIE CLUB Sorcerer (1977)

JUN 4 • UPTOWN

Four men from different parts of the globe, all hiding from their pasts in the same remote South American town, agree to risk their lives transporting several cases of dynamite (which is so old that it is dripping unstable nitroglycerin) across dangerous jungle terrain. *Introduced by SIFF Marketing Coordinator Quentin Lebeau.*

Best OF FEST



April

MAY 30-JUN 5 • UPTOWN

An obstetrician who secretly provides abortions and other family planning services to a remote village in Eastern Georgia finds herself thrust into the harsh, investigative spotlight when she loses a newborn while on duty in the unflinching second film from Dea Kulumbegashvili (*Beginning*).

NEW RESTORATION



Shall We Dance? (1996)

JUN 6-12 • UPTOWN

Shohei Sugiyama (Koji Yakusho) seems to have it all — a high-paying job as an accountant, a beautiful home, a caring wife and a doting daughter he loves dearly. However, he feels something is missing in his life.



Materialists

OPENS JUN 12 • UPTOWN

In Celine Song’s (*Past Lives*) new film a young, ambitious New York City matchmaker finds herself torn between the perfect match and her imperfect ex. Starring Dakota Johnson, Chris Pine, and Pedro Pascal.



Love

JUN 13-19 • UPTOWN

Marianne, a doctor, and Tor, a nurse, are both avoiding conventional relationships. One evening, after a blind date, Marianne encounters Tor on the ferry. Tor shares his experiences of spontaneous intimacy, causing Marianne to begin to explore whether casual intimacy could also be an option for her.

UNSTREAMABLE



Pink Flamingos (1972)

JUN 26 • UPTOWN

Notorious Baltimore criminal and underground figure Divine goes up against Connie & Raymond Marble, a sleazy married couple who make a passionate attempt to humiliate her and seize her tabloid-given title as “The Filthiest Person Alive”.

Best OF FEST



Familiar Touch

JUN 27-JUL 3 • UPTOWN

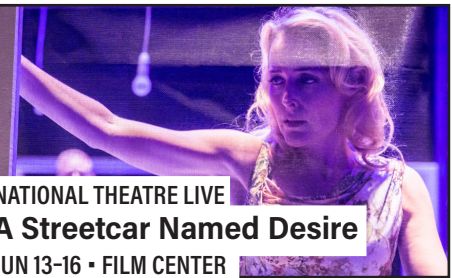
Ruth Goldman (Broadway legend Kathleen Chalfant) has been living with dementia for some time, and the time has come to place her in an assisted living facility. But while this may seem like the end, for her it represents something like a new beginning in this poignant, Venice Film Festival-winning drama.



GRRL HAUS CINEMA X SIFF NeuroCinema

JUN 8 • FILM CENTER

GRRL HAUS Cinema and SIFF present *NeuroCinema*, a collection of short films from neurodiverse artists exploring identity, memory, perception, and sensory experiences. GRRL HAUS centers the works of women, trans, non-binary, and genderqueer filmmakers from all over the globe.



NATIONAL THEATRE LIVE A Streetcar Named Desire

JUN 13-16 • FILM CENTER

Gillian Anderson (“*Sex Education*”), Vanessa Kirby (“*The Crown*”), and Ben Foster (*Lone Survivor*) lead the cast in Tennessee Williams’ timeless masterpiece, returning to cinemas. As Blanche’s fragile world crumbles, she turns to her sister Stella for solace — but her downward spiral brings her face to face with the brutal, unforgiving Stanley Kowalski.

DIRECTOR Q&A



We Are Guardians

JUN 20-22 • FILM CENTER

In the Brazilian Amazon, the illegal cutting of centuries-old trees and mining of resources on protected land is a large-scale tragedy unfolding in real-time. Directed by Indigenous activist Edivan Guajajara and filmmakers Chelsea Greene and Rob Grobman, *We Are Guardians* captures the human struggle as it plays out. *Q&A with the directors following the June 20 screening.*



Brokeback Mountain (2005)

JUN 22-24 • UPTOWN

“I wish I knew how to quit you.” Celebrate 20 years of *Brokeback Mountain* with SIFF. Ang Lee’s haunting, tender story of forbidden love between two cowboys brought to life by unforgettable performances from Heath Ledger and Jake Gyllenhaal, was nothing short of revolutionary.

DIRECTOR Q&A



There is Another Way

MAY 31 • UPTOWN
JUN 1-4 • FILM CENTER

There is Another Way tells the story of a group of visionaries who refuse to surrender to violence and injustice, and in doing so show that another path is possible — for them, for us, and for all humanity. *Director Stephen Apkon scheduled to attend for a post-film Q&A on May 31 at SIFF Cinema Uptown.*



Swamp Dogg Gets His Pool Painted

JUN 8 & 9 • FILM CENTER

Swamp Dogg Gets His Pool Painted is a wildly entertaining and fittingly unconventional documentary about convention-defying singer, songwriter and record producer Jerry Williams, aka Swamp Dogg, who has shaped not only soul music, but country, hip-hop and a dozen other genres.

35mm



They Call Her Death

JUN 14 & 15 • FILM CENTER

On the wild frontier of the American prairie, Molly Pray is on a bloody crusade against the criminal forces that have wronged her. Filmed entirely on 16mm film using cameras from the 1960s, Kansas filmmaker Austin Snell’s second feature captures the essence of low budget Euro-Westerns and Euro-Horror of the same era.